

VIIRS Testing in QGIS (version 3.20.3)

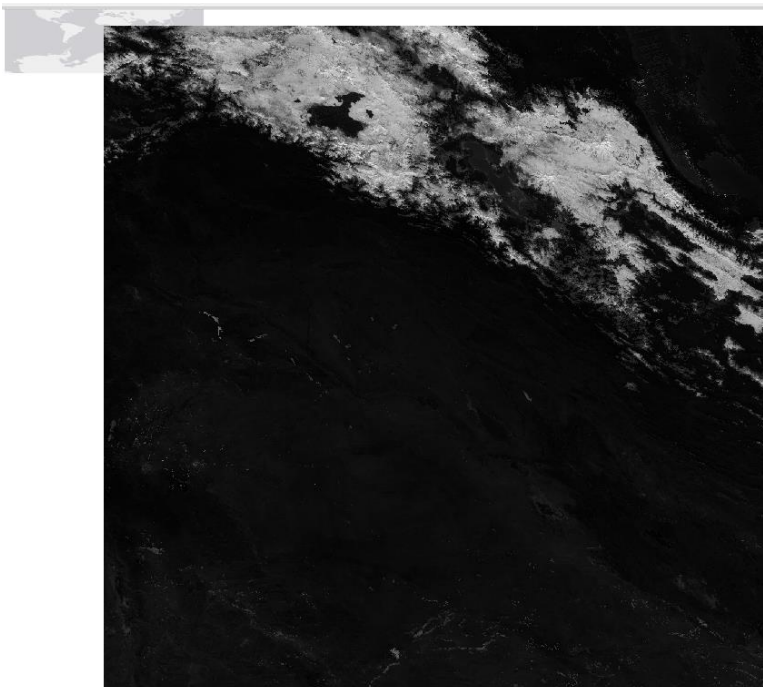
Data Products: Surface Reflectance (VNP09A1, VNP09H1, VNP09CMG), Vegetation Indices (VNP13A1), Chlorophyll (L3m_DAY_SNPP_CH)

Issue: CRS and overall Projection errors

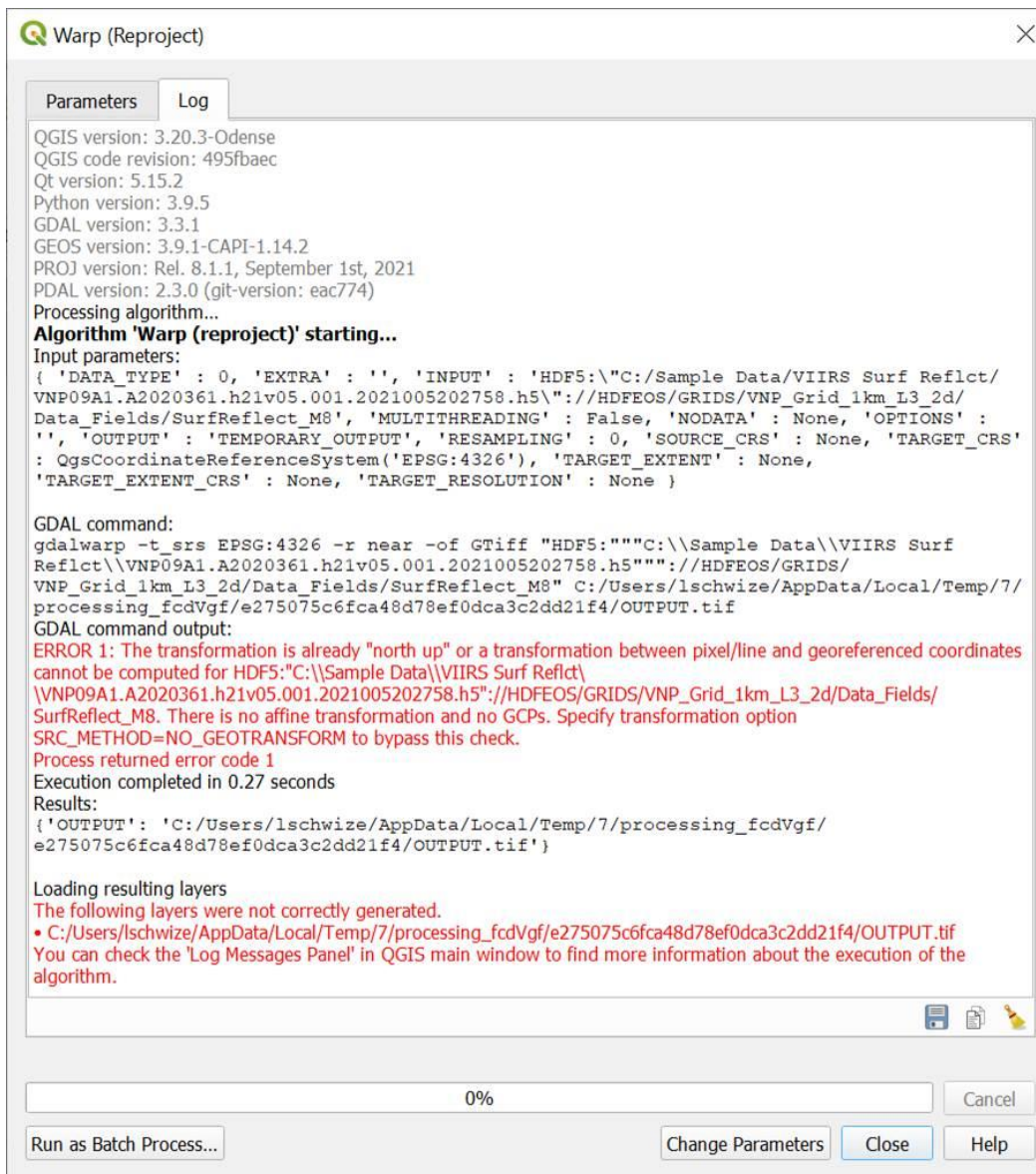
Background: Seems to be specific to HDF5 via QGIS (NetCDF seems to be ok, and both files ok in ArcGIS Pro). [Known HDF5 issues with Mac, confirmed by QGIS.](#)

Workflow: Add Raster Layer (tested with Add Mesh Layer and receive error “Invalid Data Source / Unrecognized Data Source”)

Adding HDF5 along with basemap (top left corner). When Zoomed out to layer:



Assign Projection and Reprojection (Warp), both fail:



Log:

2021-11-15T10:15:29 INFO gdalwarp -t_srs EPSG:4326 -r near -of GTiff "HDF5:\\C:\\Sample Data\\VIIRS Surf Reflect\\VNP09A1.A2020361.h21v05.001.2021005202758.h5\\"://HDFEOS/GRIDS/VNP_Grid_1km_L3_2d/Data_Fields/SurfReflect_M8"

C:/Users/lschwiz/AppData/Local/Temp/7/processing_fcdVgf/bfe184571cc247ab971b019ae4649fe7/OUTPUT.tif

Attempted: adding "SRC_METHOD=NO_GEOTRANSFORM" to the "Additional comand-line parameters" section under "Advanced Parameters"

Attempted: tested with Add Mesh Layer and receive error "Invalid Data Source / Unrecognized Data Source"